

4489.** 1.5 (.060) TYPE SERIES · RECEPTACLES FOR CONNECTOR



Specification	Receptacles for connector
For male (mm)	1,6x0,8
Wire size mm² (AWG)	0,75-1,25 (18-16)
Ø Insulation (mm)	=<2,4
Counterpart	6486.** , 6487.** , 6488.** , 6489.** , 6490.** , 6491.**

Materials, temperature and contact resistance

Part nr.	Material	Finishing	Max. Temp. (°C)
4489.00	Brass	Natural	110
4489.01	Brass	Pre-tin-plated	120
4489.30	Bronze	Natural	120
4489.31	Bronze	Pre-tin-plated	130

Material thickness (mm)	0,25
Application tool	MN4489
Wire strip length	3.0 (±0.3) mm

Crimping parameters & pull out force

Wire section (±10%)	Conductor		Insulator	Pull-out force (N)
	Height (mm)	Width (mm)		
1.00 mm ²	1.40 (±0.05)	1.80 (±0.05)	(T.B.D.)	108N @ 60s
0.75 mm ²	1.30 (±0.05)	1.79 (±0.05)	(T.B.D.)	84N @ 60s

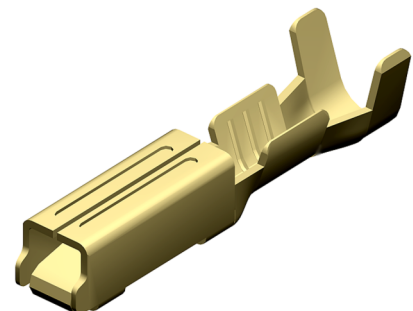
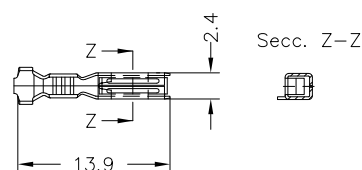
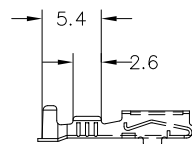
Values only valid for the application tool specified upwards. The insulator widths are only indicative as they are dependent on the sheath thickness of the wire used.

Winding number	6000
-----------------------	------

Approvals



Drawing



4489.**

1.5 (.060) TYPE SERIES · RECEPTACLES FOR CONNECTOR



(T.B.D.): To be determined

Disclaimer

Data obtained from Escubedo Laboratory essays, using own methodology, cablings, equipment and original crimping tools, done in laboratory conditions and following the indicated standards, errors and omissions excepted. This document has no contractual meaning and it is publicised only for informative purposes. It can be changed without prior notice. The end customer has the sole responsibility to check these characteristics in its environment and with its own components, manufacturing methods and equipment. See also the full range product overview if available. For further information please visit our web site or contact us

Rev. Nr.	Concept	Date	Created/Revised	Approved
A1	Datasheet generated automatically [A1]	2025-07-10	E. Roura (laboratory dept.)	O. Roura (engineering dept.)

Escubedo Connection Systems, S.A.U. · 17843 Riudellots de la Creu · Girona · Spain
 Tel.: 34 972 171 706 · Fax: +34 972 171 714 · info@escubedo.com · www.escubedo.com