

4838.** 6.3 (.250) TYPE SERIES · RECEPTACLES



For male (mm) 6,3x0,8

Wire size mm² (AWG) 1-2,5 (18-14)

Ø Insulation (mm) 2,5-3,7

Materials, temperature and contact resistance

Part nr.	Material	Finishing	Max. Temp. (°C)	Contact Resist (mΩ)
4838.00	Brass	Natural	110	(T.B.D.)
4838.01	Brass	Pre-tin-plated	120	(T.B.D.)
4838.02	Brass	Tin plated	120	(T.B.D.)
4838.24	Steel	Nickel-plated	300	1.50

Material thickness (mm) 0,4

Max. rated current

Wire section	4838.00 / 01 / 24 / 02
1.00 mm ²	12A
1.50 mm ²	16A
2.50 mm ²	20A

Compatible connectors 26314**, 26315**

Insertion / Withdrawal forces


	4838.00	4838.01 / 02	4838.24
1st Insertion (max)	20N ¹	20N ¹	25N ¹
1st Withdrawal (max)	60N ¹	60N ¹	60N ¹
1st Withdrawal (min)	27N ¹	22N ¹	22N ¹
6th Withdrawal (min)	22N ¹	18N ¹	18N ¹

¹ Valid for Natural Brass Tab

Application tool MN4838

Wire strip length 5.5 (±0.5) mm

Crimping parameters & pull out force

Wire section (±10%)	Conductor 		Insulator	Pull-out force (N)
	Height (mm)	Width (mm)	Width (mm)	
1.00 mm ²	1.67 (±0.05)	2.84 (±0.05)	4.18 (±0.10)	108N @ 60s
1.50 mm ²	1.82 (±0.05)	2.85 (±0.05)	4.20 (±0.10)	150N @ 60s
2.50 mm ²	2.10 (±0.05)	2.88 (±0.05)	4.22 (±0.10)	230N @ 60s

Values only valid for the application tool specified upwards. The insulator widths are only indicative as they are dependent on the sheath thickness of the wire used.

Winding number 7000

Approved regulations

Part nr.	Approval	Standard	File	Certified framework
4838.24	VDE	EN 61210	5000955-1433-0002 / 302565 / TL3 / RHZ	1.0 - 2.5mm ² . 300°C max

Approvals

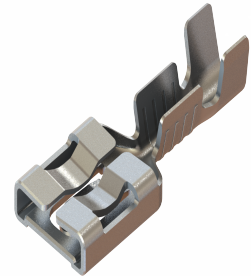
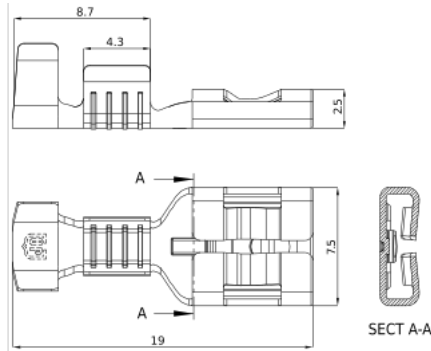


4838.**

6.3 (.250) TYPE SERIES · RECEPTACLES



Drawing

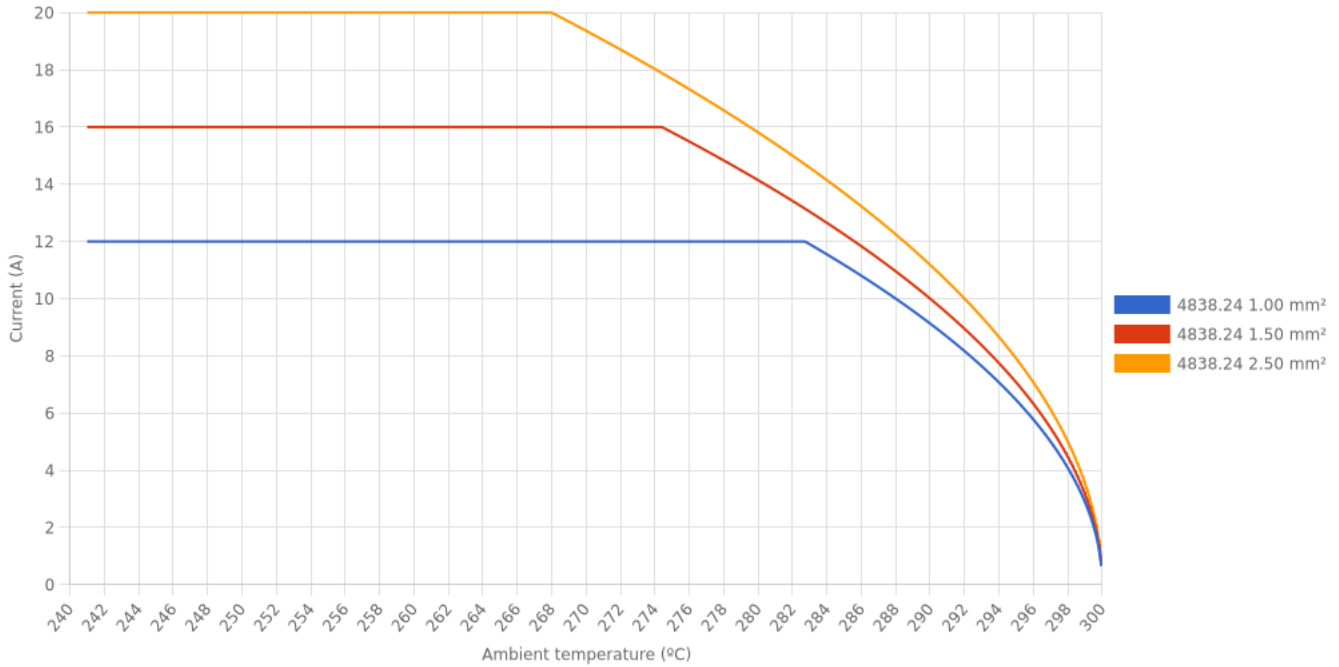


4838.24 NICKEL-PLATED STEEL
6.3 (.250) TYPE SERIES · RECEPTACLES



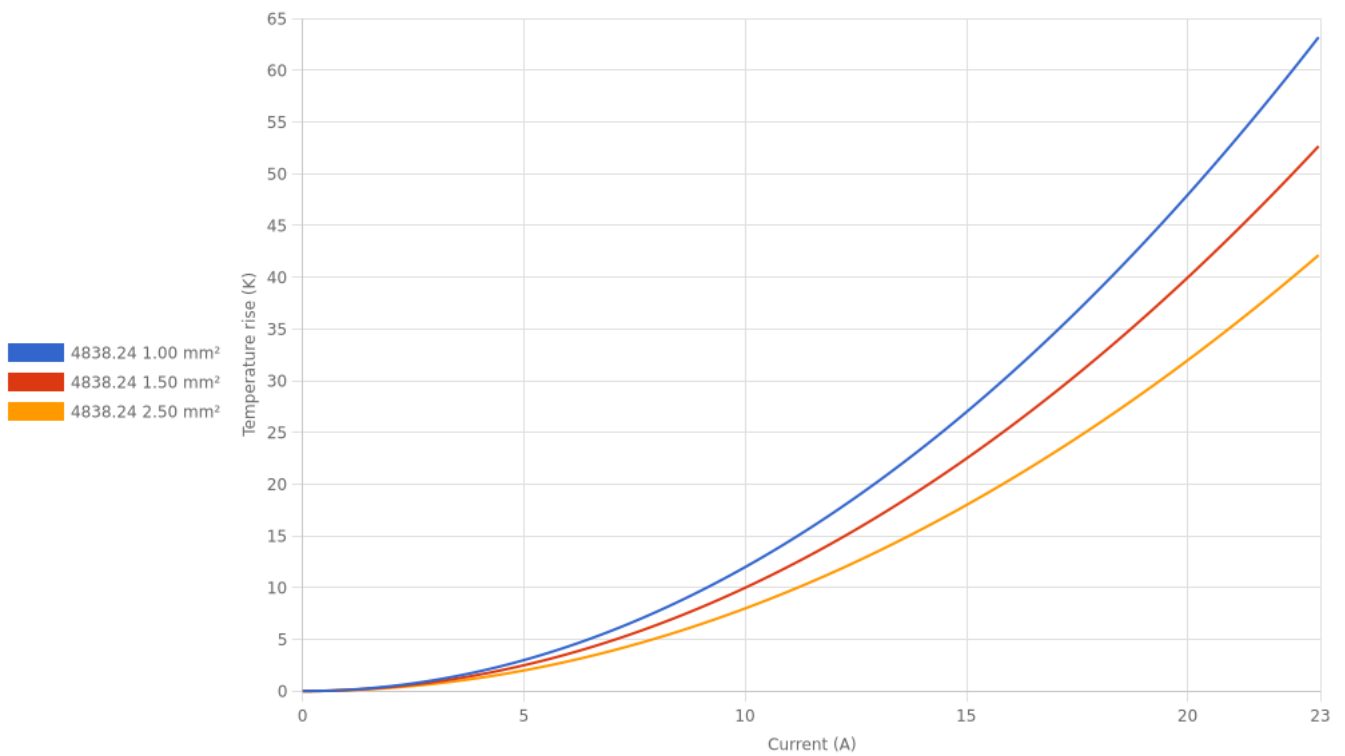
Derating curve

Current carrying capacity vs. Ambient temperature



Temperature rise curve

Terminal temperature rise due to the current carried



Valid for Natural Brass Tab

4838.****6.3 (.250) TYPE SERIES · RECEPTACLES****Disclaimer**

Data obtained from Escubedo Laboratory essays, using own methodology, cablings, equipment and original crimping tools, done in laboratory conditions and following the indicated standards, errors and omissions excepted. This document has no contractual meaning and it is publicised only for informative purposes. It can be changed without prior notice. The end customer has the sole responsibility to check these characteristics in its environment and with its own components, manufacturing methods and equipment. See also the full range product overview if available. For further information please visit our web site or contact us