

5218.** 4.8 (.187) TYPE SERIES · MALE-FEMALE TERMINALS



Specification Low insertion

For male (mm) 4,8x0,8

Wire size mm² (AWG) 1-2,5 (18-14)

Ø Insulation (mm) 3-4,3

Materials, temperature and contact resistance

Part nr.	Material	Finishing	Max. Temp. (°C)
5218.00	Brass	Natural	110
5218.01	Brass	Pre-tin-plated	120
5218.24	Steel	Nickel-plated	300
5218.30	Bronze	Natural	120
5218.31	Bronze	Pre-tin-plated	130
5218.70	German Silver	Natural	210

Material thickness (mm) 0,35

Insertion / Withdrawal forces


	5218.00 / 01 / 24 / 30 / 31 / 70
1st Insertion (max)	25N ¹
1st Withdrawal (max)	50N ¹
1st Withdrawal (min)	22N ¹
6th Withdrawal (min)	13N ¹

¹ Valid for Natural Brass Tab

Application tool MN5216

Wire strip length 4.3 (±0.5) mm

Crimping parameters & pull out force

Wire section (±10%)	Conductor 		Insulator	Pull-out force (N)
	Height (mm)	Width (mm)		
1.00 mm ²	1.45 (±0.05)	2.83 (±0.05)	4.16 (±0.10)	108N @ 60s
1.50 mm ²	1.60 (±0.05)	2.85 (±0.05)	4.16 (±0.10)	150N @ 60s
2.00 mm ²	1.75 (±0.05)	2.86 (±0.05)	4.16 (±0.10)	150N @ 60s
2.50 mm ²	1.90 (±0.05)	2.88 (±0.05)	4.16 (±0.10)	230N @ 60s

Values only valid for the application tool specified upwards. The insulator widths are only indicative as they are dependent on the sheath thickness of the wire used.

Winding number 2500

Max. rated current

Wire section	5218.00 / 01 / 24 / 30 / 31 / 70
1.00 mm ²	12A
1.50 mm ²	16A
2.50 mm ²	20A

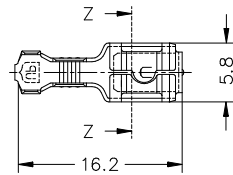
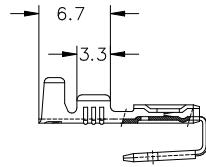
Approvals



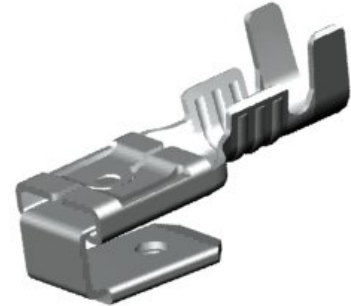
5218.**
4.8 (.187) TYPE SERIES · MALE-FEMALE TERMINALS



Drawing



Secc. Z-Z



Disclaimer

Data obtained from Escubedo Laboratory essays, using own methodology, cablings, equipment and original crimping tools, done in laboratory conditions and following the indicated standards, errors and omissions excepted. This document has no contractual meaning and it is publicised only for informative purposes. It can be changed without prior notice. The end customer has the sole responsibility to check these characteristics in its environment and with its own components, manufacturing methods and equipment. See also the full range product overview if available. For further information please visit our web site or contact us

Rev. Nr.	Concept	Date	Created/Revised	Approved
A1	Datasheet generated automatically	2025-10-10	Laboratory dept.	E. Roura (laboratory dept.)

Escubedo Connection Systems, S.A.U. · 17843 Riudellots de la Creu · Girona · Spain
Tel.: 34 972 171 706 · Fax: +34 972 171 714 · info@escubedo.com · www.escubedo.com