

## 6402E\*\* 2.8 (.110) TYPE SERIES · MALES FOR CONNECTOR



**Specification** Standard Tab

**Typology** WITHOUT Hole and WITHOUT Side stops

**Wire size mm<sup>2</sup> (AWG)** 0,3-0,6 (22-20)

**Ø Insulation (mm)** 1,4-2,3

**Materials, temperature and contact resistance**


Part nr.	Material	Finishing	Max. Temp. (°C)
6402E00	Brass	Natural	110
6402E01	Brass	Pre-tin-plated	120
6402E30	Bronze	Natural	120
6402E31	Bronze	Pre-tin-plated	130

**Material thickness (mm)** 0,4

**Application tool** MN6402E

**Wire strip length** 4.2 (±0.5) mm

**Crimping parameters & pull out force**

Wire section (±10%)	Conductor 		Insulator	Pull-out force (N)
	Height (mm)	Width (mm)	Width (mm)	
0.35 mm <sup>2</sup>	1.15 (±0.03)	2.03 (±0.03)	2.67 (±0.10)	28N @ 60s
0.50 mm <sup>2</sup>	1.20 (±0.03)	2.04 (±0.03)	2.68 (±0.10)	56N @ 60s
0.60 mm <sup>2</sup>	1.25 (±0.05)	2.05 (±0.05)	2.69 (±0.10)	56N @ 60s

Values only valid for the application tool specified upwards. The insulator widths are only indicative as they are dependent on the sheath thickness of the wire used.

**Winding number** 5000

**Compatible connectors** 21002\*\*, 21016\*\*, 22840\*\*, 22841\*\*, 22853\*\*

**Tongue thickness (mm)** 0,8

**Approved regulations**

Part nr.	Approval	Standard	File	Certified framework
6402E00	UL	UL 310	E211727 E347133	AWG 22-20 (7-10 Stranded Cu) / MN6402E
6402E01	UL	UL 310	E211727 E347133	AWG 22-20 (7-10 Stranded Cu) / MN6402E

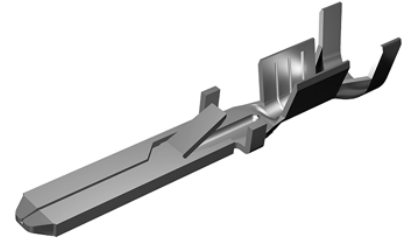
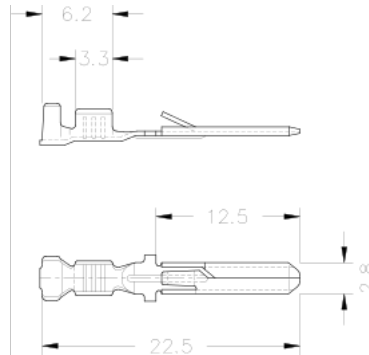
**Approvals**



**6402E\*\***  
**2.8 (.110) TYPE SERIES · MALES FOR CONNECTOR**



**Drawing**



**Disclaimer**

Data obtained from Escubedo Laboratory essays, using own methodology, cabling, equipment and original crimping tools, done in laboratory conditions and following the indicated standards, errors and omissions excepted. This document has no contractual meaning and it is publicised only for informative purposes. It can be changed without prior notice. The end customer has the sole responsibility to check these characteristics in its environment and with its own components, manufacturing methods and equipment. See also the full range product overview if available. For further information please visit our web site or contact us