

6402F** 2.8 (.110) TYPE SERIES · MALES FOR CONNECTOR



Specification	Standard Tab
Typology	WITH Hole and WITHOUT side stops
Wire size mm² (AWG)	0,3-0,6 (22-20)
Ø Insulation (mm)	1,4-2,3

Materials, temperature and contact resistance

Part nr.	Material	Finishing	Max. Temp. (°C)
6402F01	Brass	Pre-tin-plated	120

Material thickness (mm) 0,4

Crimping parameters & pull out force

Wire section (±10%)	Conductor		Insulator	Pull-out force (N)
	Height (mm)	Width (mm)		
0.35 mm ²	1.15 (±0.03)	2.03 (±0.03)	2.67 (±0.10)	28N @ 60s
0.50 mm ²	1.20 (±0.03)	2.04 (±0.03)	2.68 (±0.10)	56N @ 60s
0.60 mm ²	1.25 (±0.05)	2.05 (±0.05)	2.69 (±0.10)	56N @ 60s

Values only valid for the application tool specified upwards. The insulator widths are only indicative as they are dependent on the sheath thickness of the wire used.

Winding number 5000

Compatible connectors 21002**, 21016**, 22840**, 22841**, 22853**

Tongue thickness (mm) 0,8

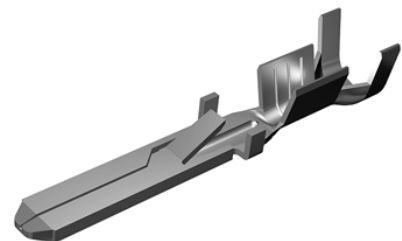
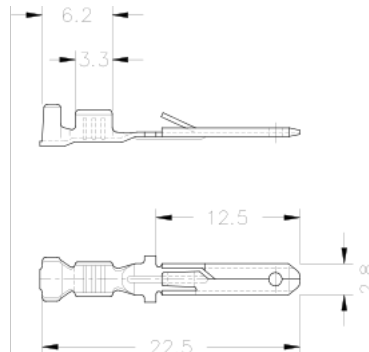
Approved regulations

Part nr.	Approval	Standard	File	Certified framework
6402F01	UL	UL 310	E211727 E347133	AWG 22-20 (7-10 Stranded Cu) / MN6402F

Approvals



Drawing



Disclaimer

Data obtained from Escubedo Laboratory essays, using own methodology, cabling, equipment and original crimping tools, done in laboratory conditions and following the indicated standards, errors and omissions excepted. This document has no contractual meaning and it is publicised only for informative purposes. It can be changed without prior notice. The end customer has the sole responsibility to check these characteristics in its environment and with its own components, manufacturing methods and equipment. See also the full range product overview if available. For further information please visit our web site or contact us