

## 8545.\*\*

### UP-FIT SERIES - 4.20 MM UP-FIT CONNECTIONS



**Description** Insulation diameter range changed on May-2025.

For reference previous insulation range was:

&Oslash; Insulation (mm): 1-1,8

This change did not affect the terminal drawing or geometry.

**Specification** 4.20 mm UP-FIT Female Terminals

**Wire size mm<sup>2</sup> (AWG)** 0,08-0,32 (22-28)

**Ø Insulation (mm)** 1-1,5

**Materials, temperature and contact resistance**

| Part nr. | Material | Finishing      | Max. Temp. (°C) |
|----------|----------|----------------|-----------------|
| 8545.01  | Brass    | Pre-tin-plated | 120             |
| 8545.31  | Bronze   | Pre-tin-plated | 130             |

**Material thickness (mm)** 0,2

**Compatible connectors** 242M12\*\*, 242M22\*\*, 242M23\*\*, 242M24\*\*, 242M25\*\*, 242M26\*\*, 242M28\*\*

**Counterpart** 7545.\*\*; 7546.\*\*; 7547.\*\*



**Insertion / Withdrawal forces**

|                      | 8545.01 / 31    |
|----------------------|-----------------|
| 1st Insertion (max)  | 5N <sup>1</sup> |
| 1st Withdrawal (min) | 1N <sup>1</sup> |

<sup>1</sup> Valid for UP-FIT Series

**Application tool** MN7545

**Crimping parameters & pull out force**

| Wire section (±10%) | Conductor  |               | Insulator  | Pull-out force (N) |
|---------------------|---|---------------|---|--------------------|
|                     | Height (mm)   | Width (mm)    | Width (mm)  |                    |
| 22 AWG              | 0.84 (± 0.03)   | 1.26 (± 0.03) | 1.65 (± 0.10)   | 36N @ 60s          |
| 24 AWG              | 0.80 (± 0.03)   | 1.25 (± 0.03) | 1.65 (± 0.10)   | 22,3N @ 60s        |
| 26 AWG              | 0.75 (± 0.03)   | 1.26 (± 0.03) | 1.65 (± 0.10)   | 13,4N @ 60s        |
| 28 AWG              | 0.70 (± 0.03)   | 1.23 (± 0.03) | 1.65 (± 0.10)   | ≥ 12N              |

Values only valid for the application tool specified upwards. The insulator widths are only indicative as they are dependent on the sheath thickness of the wire used.

**Winding number** 9000

## 8545.\*\* UP-FIT SERIES - 4.20 MM UP-FIT CONNECTIONS



### Approved regulations

| Part nr.             | Approval | Standard | File    | Certified framework         |
|----------------------|----------|----------|---------|-----------------------------|
| 8545.01 <sup>1</sup> | UL       | UL 1977  | E223221 | AWG 28-22 / MN8545 - MN7545 |
| 8545.31 <sup>1</sup> | UL       | UL 1977  | E223221 | AWG 28-22 / MN8545 - MN7545 |

<sup>1</sup> Cat. No. meets with the standard UL1977 as a component of UP-FIT full connection system.

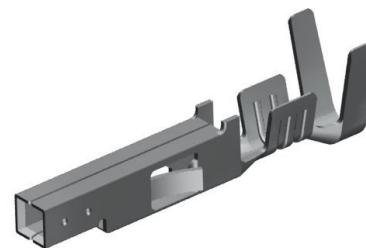
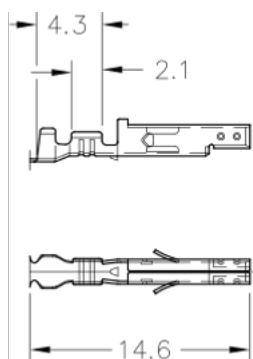
Rated current and voltage:

- 2 and 4 poles - AWG 28 - 2A/600V (USR, CND)
- 2 and 4 poles - AWG 26 - 3A/600V (USR, CND)
- 2 and 4 poles - AWG 24 - 3A/600V (USR, CND)
- 2 and 4 poles - AWG 22 - 4A/600V (USR, CND)
- 6 poles - AWG 28 - 2A/600V (USR, CND)
- 6 poles - AWG 26 - 2A/600V (USR, CND)
- 6 poles - AWG 24 - 3A/600V (USR, CND)
- 6 poles - AWG 22 - 3A/600V (USR, CND)
- 8, 10, 12 and 16 poles - AWG 28 - 1A/600V (USR, CND)
- 8, 10, 12 and 16 poles - AWG 26 - 1A/600V (USR, CND)
- 8, 10, 12 and 16 poles - AWG 24 - 2A/600V (USR, CND)
- 8, 10, 12 and 16 poles - AWG 22 - 3A/600V (USR, CND)

### Approvals



### Drawing



### Disclaimer

Data obtained from Escubedo Laboratory essays, using own methodology, cabling, equipment and original crimping tools, done in laboratory conditions and following the indicated standards, errors and omissions excepted. This document has no contractual meaning and it is publicised only for informative purposes. It can be changed without prior notice. The end customer has the sole responsibility to check these characteristics in its environment and with its own components, manufacturing methods and equipment. See also the full range product overview if available. For further information please visit our web site or contact us