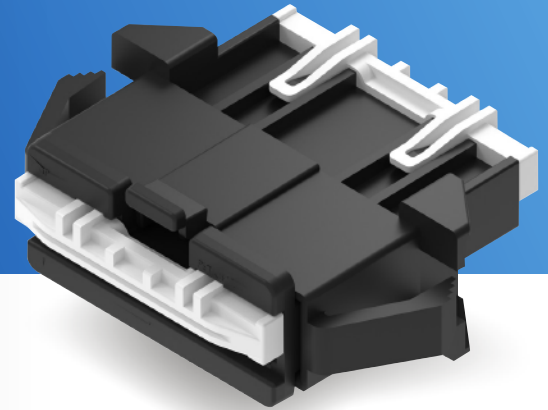


UP-XM Connector Family

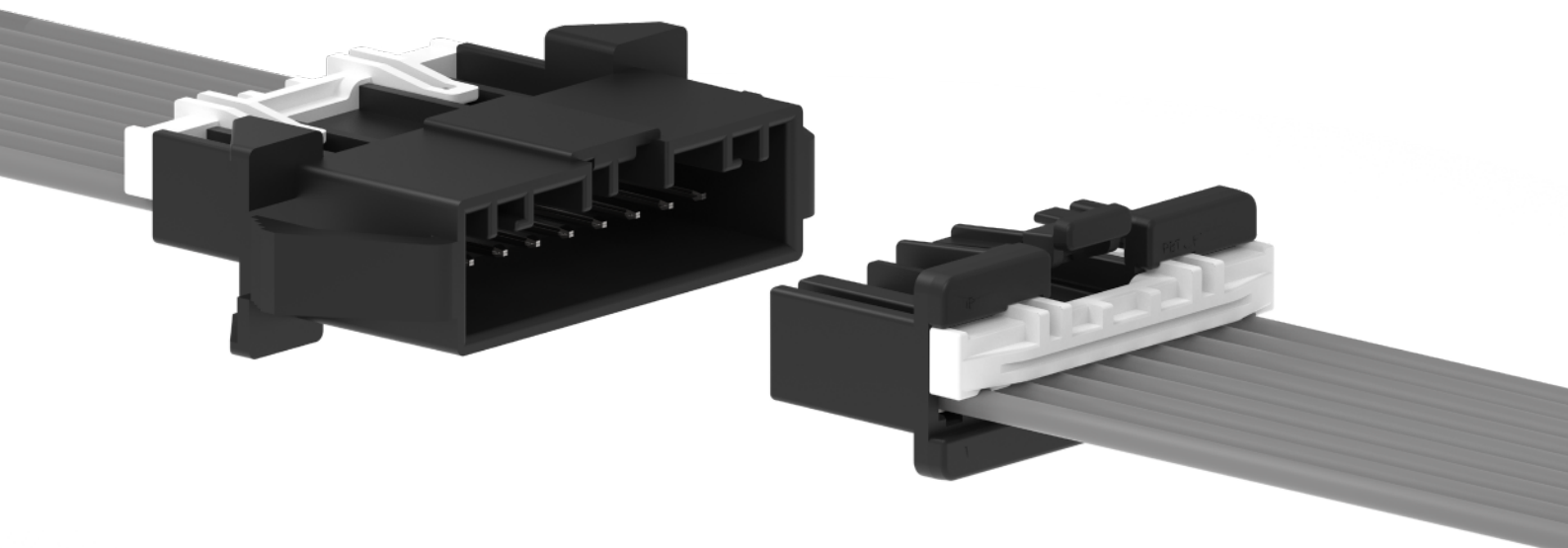
Pitch: 2,5mm

TECHNICAL INFORMATION

| | |
|--------------------------------------|---------------------------------------|
| Pitch | 2,5mm |
| Pin's lay-out | 2 to 16 ways, single row plug |
| Locking Feature | Connector |
| Wire-to-wire Connections | Aerial & Panel Mount |
| Wire-to-board (SMT type) Connections | Top Entry & Side Entry |
| Secondary Locking | Yes |
| Inertial Locking with Audible Click | Yes |
| Maximum Current Rating | 3 A |
| Maximum Voltage Rating | 125 V |
| Temperature Range | -40°C to +125°C |
| Wire Size Range | 0,08-0,50 mm ² (28-22 AWG) |
| Guide for the Design Criteria | LV 214 Standard |
| Test for Validation Plan | LV 214 Standard |
| Colour of Connector | Black |
| Colour of Secondary Lock | Black or White |



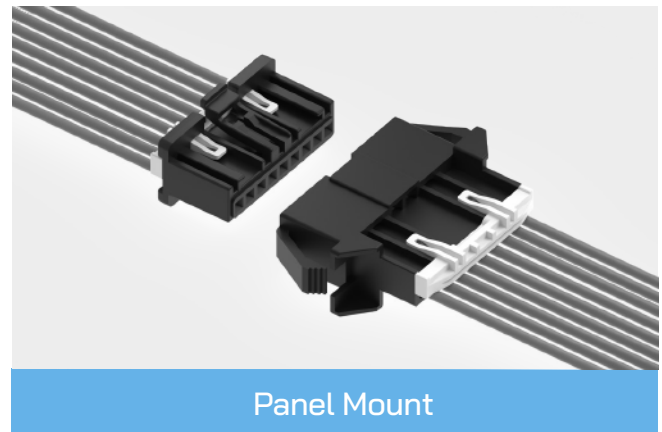
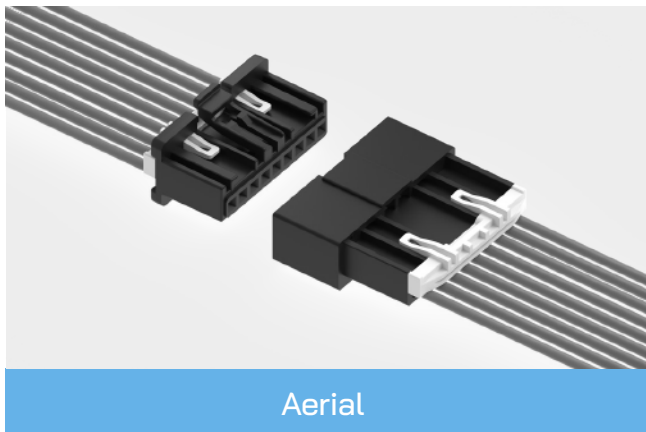
- ◆ New connector family to provide a complete solution in multiway connections.
- ◆ The connector design provides full protection to male pins against deformation caused by a wrong insertion of the mating part.



Complete Solution for Intermediate Connections

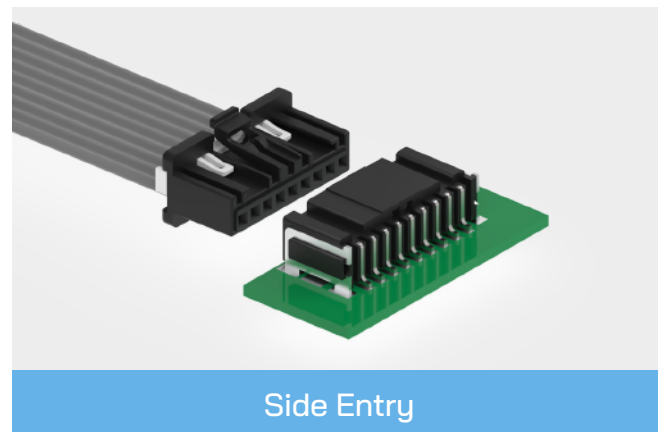
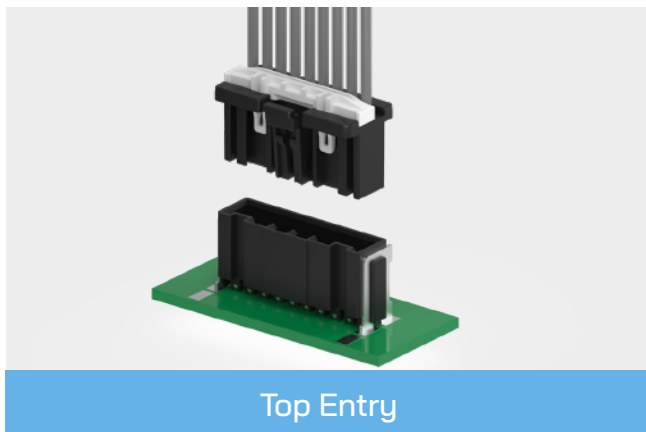
One single design provides solutions to both connection types:

WIRE-TO-WIRE CONNECTIONS



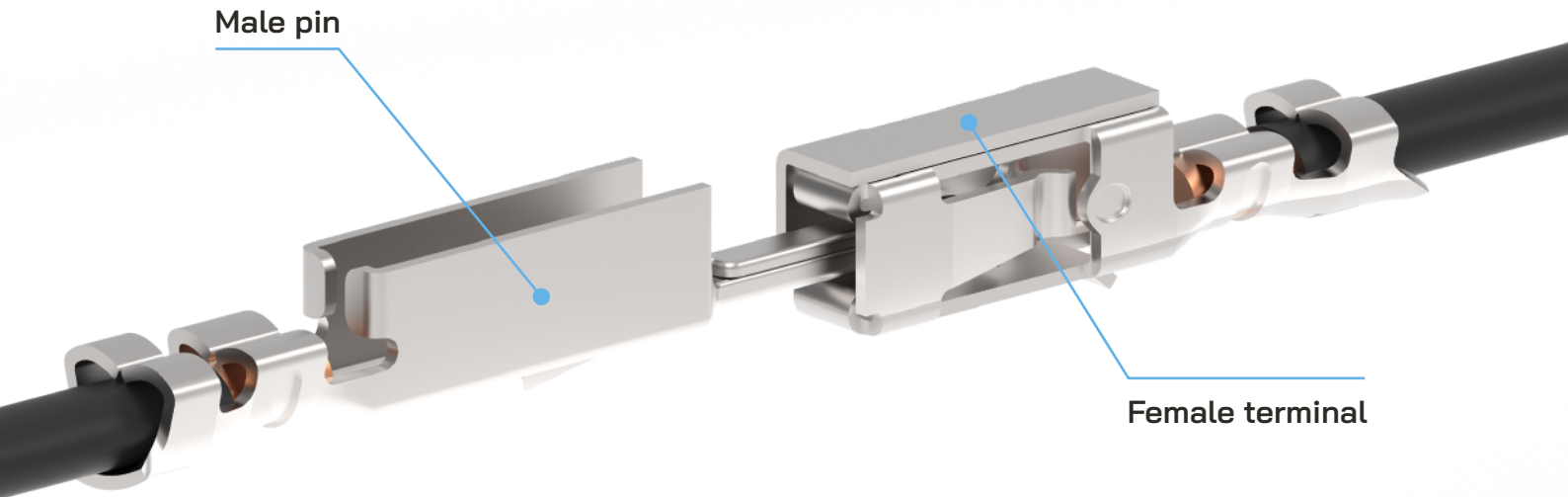
Arrangement in one single row, connectors up to 16 ways.

WIRE-TO-BOARD CONNECTIONS (SMT TYPE)





Bracket (solder tab) is designed to provide HIGHER PCB RETENTION, so that PCB can withstand higher upward pull forces and thus meet vibration requirements.

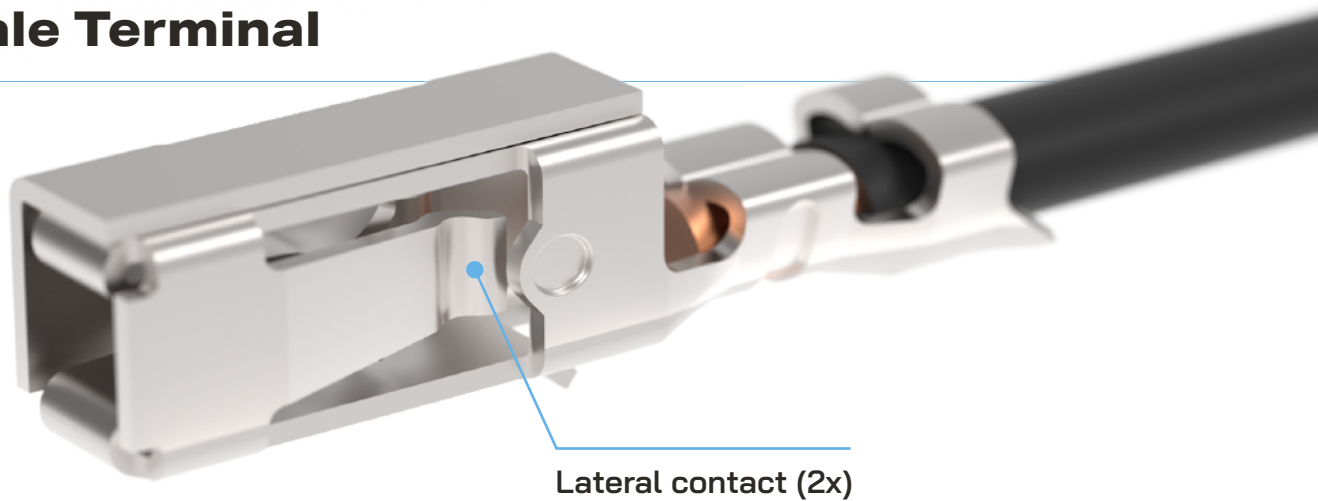
Highly reliable electrical connection



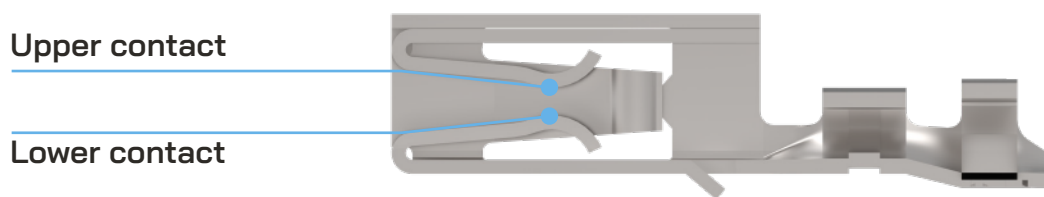
RELATED TERMINALS

| Model | Series | Tab (mm ²) | Wire size (mm ²) |
|---|---------|------------------------|------------------------------|
|  | 8701.xx | 0,63x0,63 | 0.25-0.50 |
|  | 6701.xx | 0,63x0,63 | 0.25-0.50 |

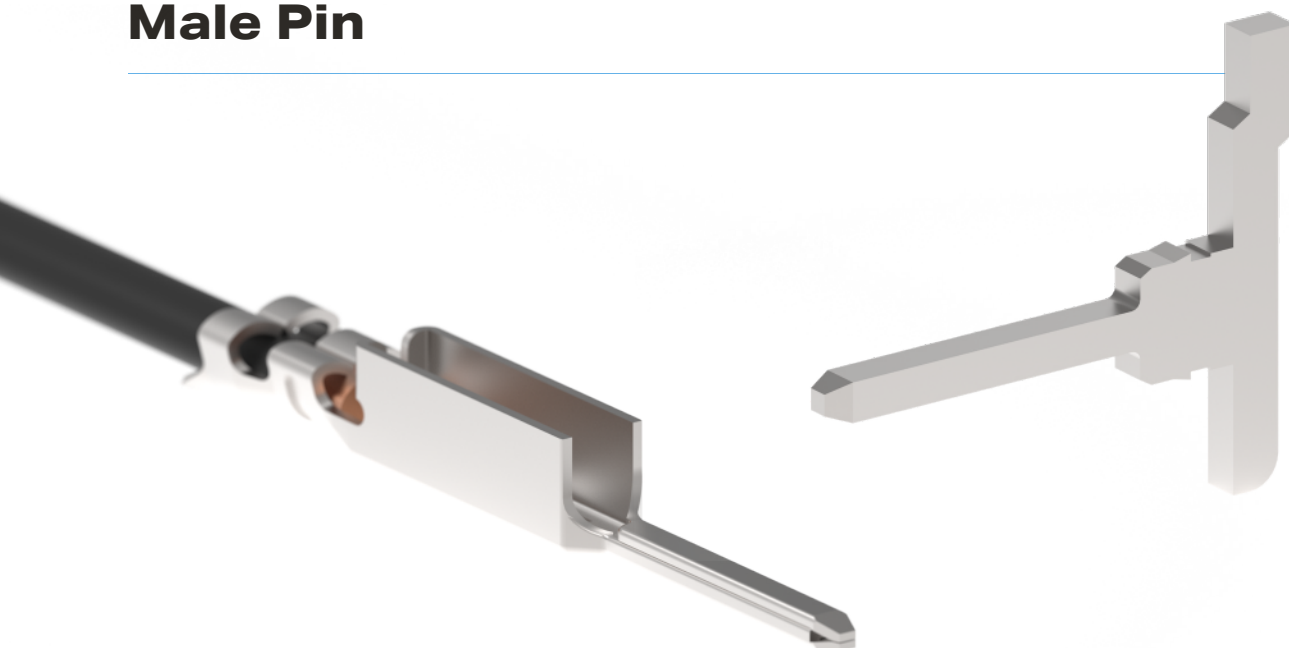
Female Terminal



SPRING EFFECT CONTACT LEGS

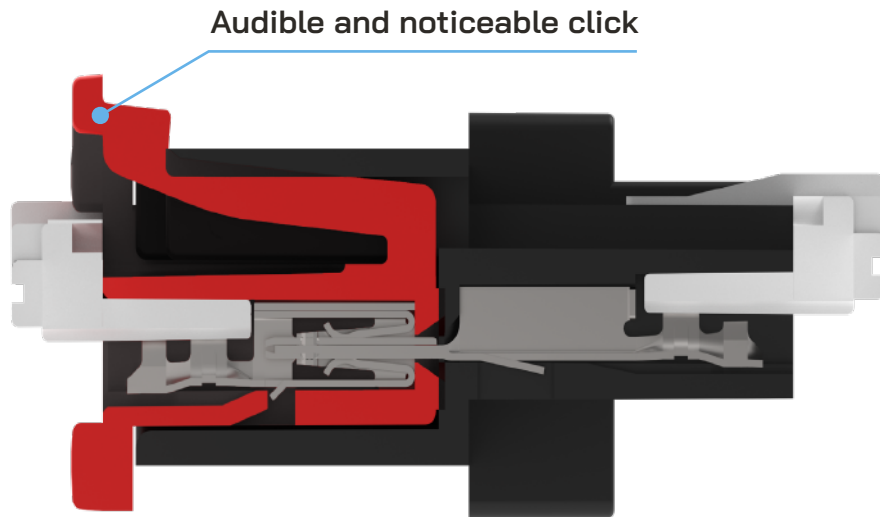


Male Pin



Assembly process

Releasing the latch allows disassembly operations to be carried out.



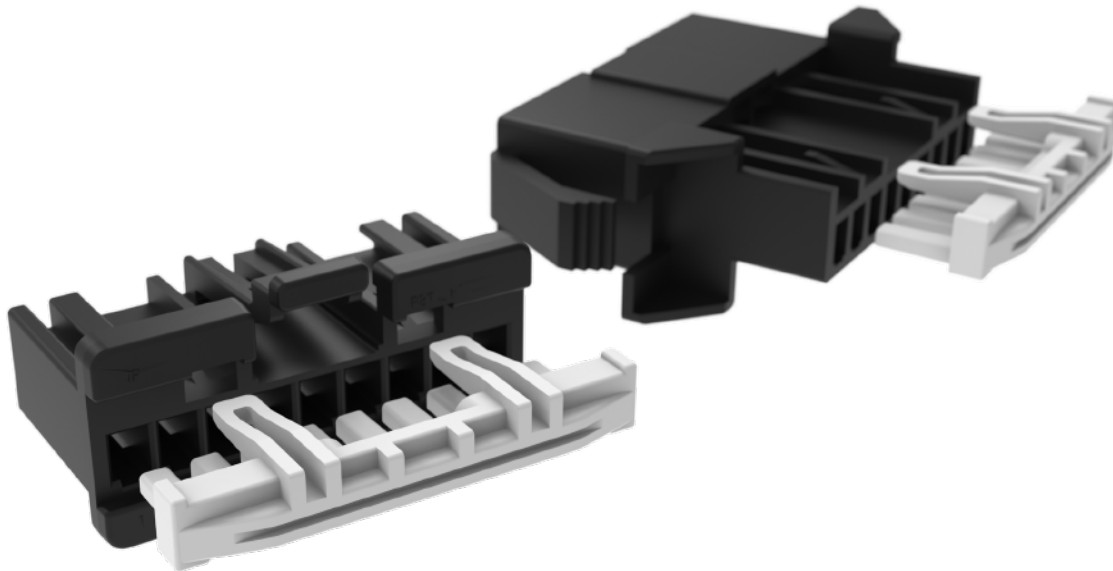
Inertial Locking

The connector's structure provides the strongest force at the beginning of the connection, and softer at the end. It minimizes the possibility of an incomplete connection.



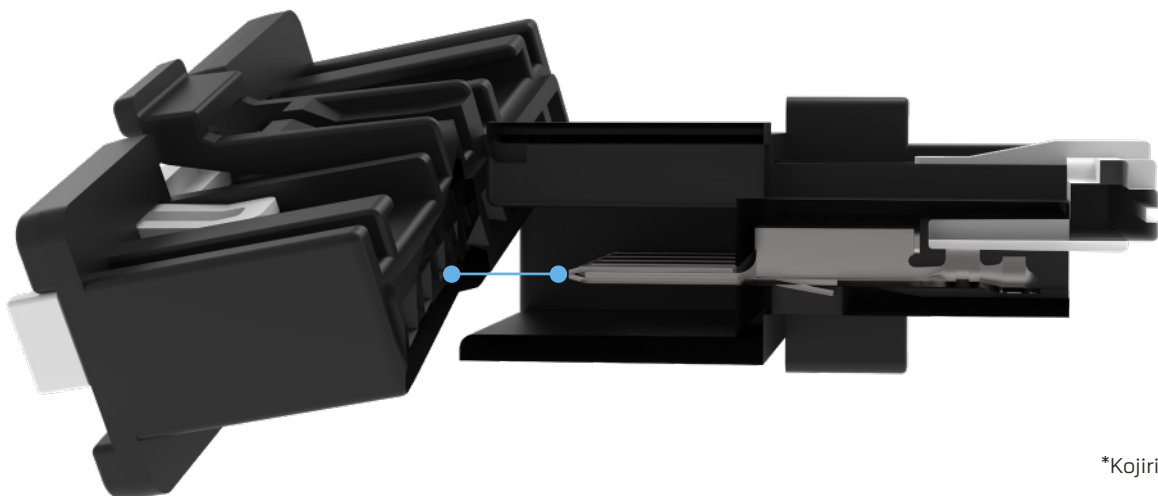
Secondary Lock

A single design of secondary lock applies to both male and female-holder connectors.



Connector design

Male pins are protected against deformation caused by incorrect insertion of the mating part.



*Kojiri test

Miniaturization Trend

UP-XN connector family responds to the miniaturization trend in the automotive connectivity.



Benefits of UP-XM Connection can be summarize as below

DUE TO

Enlargement of part diversity

Enlargement of connection design
Flexibility in connector configuration

Capability of connector design
Capability of female terminal

Single design of secondary lock

Stabilization of solder tab on PCB

Reduction of components/source of errors

Implementation of miniaturization trend

LEADS TO

Multiway connections

Diversity of usage area

High reliable electrical connection

Reduction of assembly cost

Ensuring of vibration requirements

Reduction of failure costs

Compact solution in limited area
Product development

If you need more information on the UP-XM range, please contact Escubedo
or visit our website: en.escubedo.com/products/by-range/up-xm/